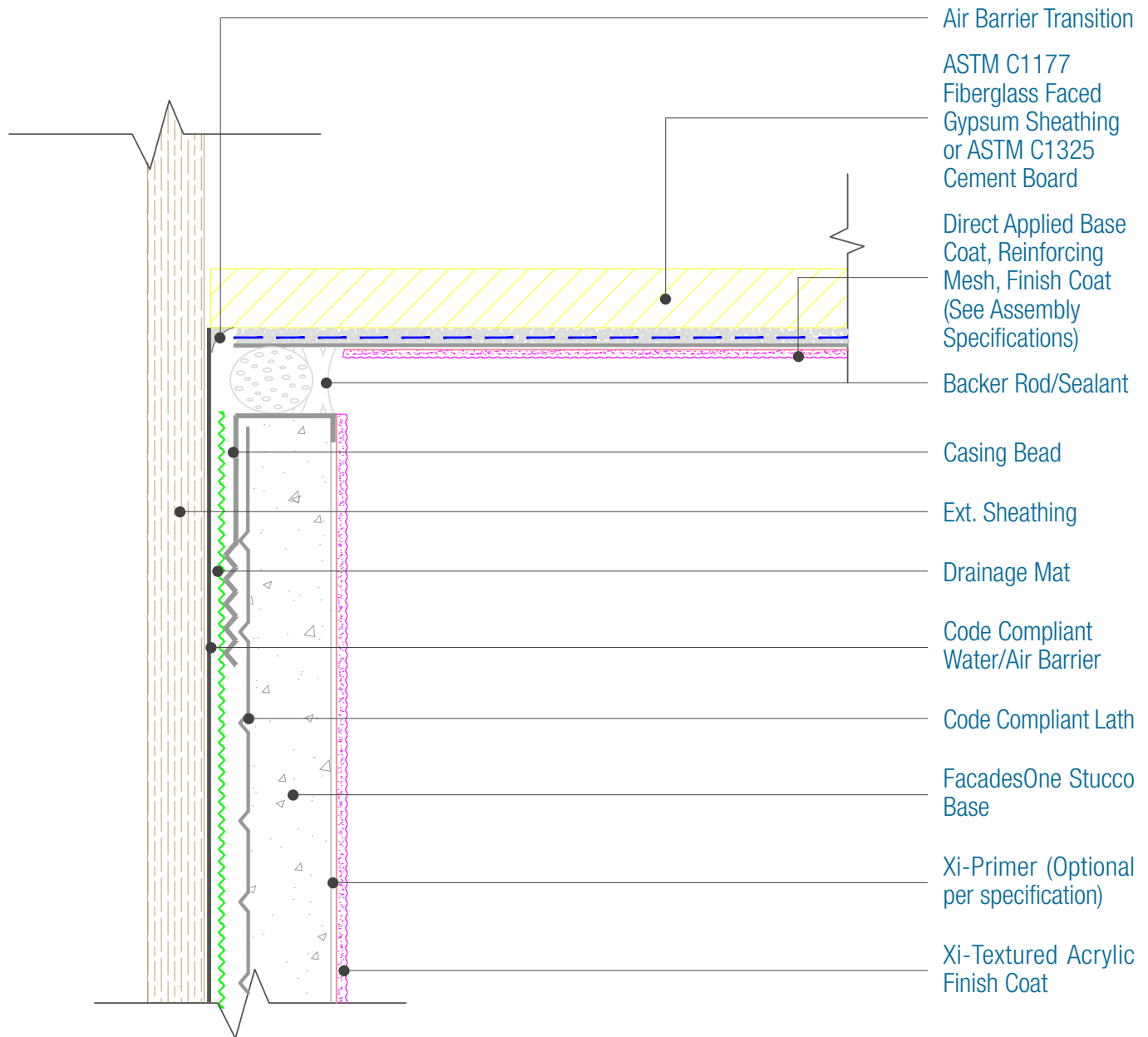




15262 Capital Port
 San Antonio, TX 78249
 1-800-611-6602
 facadesxi.com

FacadesOne Max Stucco Assembly Termination into Direct Applied Soffit

Date: 06-15-2020 | Detail: f1max.IV.1 v1



- Air Barrier Transition
- ASTM C1177
Fiberglass Faced
Gypsum Sheathing
or ASTM C1325
Cement Board
- Direct Applied Base
Coat, Reinforcing
Mesh, Finish Coat
(See Assembly
Specifications)
- Backer Rod/Sealant
- Casing Bead
- Ext. Sheathing
- Drainage Mat
- Code Compliant
Water/Air Barrier
- Code Compliant Lath
- FacadesOne Stucco
Base
- Xi-Primer (Optional
per specification)
- Xi-Textured Acrylic
Finish Coat

NOTES:

1. There must be continuous airtightness over the entire building enclosure, where required by code. The actual project detail must show this continuity.

DISCLAIMER: FACADESXI details are recommendations that should be used for guidance only. There may be equivalent means of installation that are not shown in FACADESXI assembly details. All FACADESXI products shall be installed in accordance with FACADESXI product datasheets and all applicable building codes and industry standard practices. The design, engineering and final details incorporating any FACADESXI product are the sole responsibility of the project design professional. FACADESXI is not responsible for determining the acceptability and/or applicability of any FACADESXI product or detail for any specific project or condition. FACADESXI disclaims all liability for improper installation, workmanship, or design by a third-party. EXCEPT FOR ANY EXPRESS REPRESENTATIONS AND WARRANTIES BY FACADESXI, ALL IMPLIED WARRANTIES OF ANY KIND, INCLUDING BUT NOT LIMITED TO WARRANTIES OF MERCHANTABILITY OR FITNESS FOR A PARTICULAR PURPOSE OR COMPLIANCE WITH LAWS OR GOVERNMENT RULES OR REGULATIONS APPLICABLE TO THE PROJECT, ARE HEREBY DISCLAIMED. FACADESXI's website should always be consulted for the latest version of any details and/or product information. Contact FACADESXI for any technical assistance.